

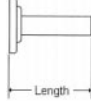


Waveguide Components

SHORT TERMINATION

- Description:
- Full waveguide frequency range
 - Units pressure tested to 30 psi
 - Finish is a unique corrosion-resistant 316 stainless steel epoxy coating

- VSWR: 1.10 max
- IFI series ST Terminations utilizes Medium Power Elements to achieve low VSWR and stable electrical characteristics



Ordering Information:

Typical Part #: ST650_B_-2

Basic Model#:

Material: A=Alum, B=Brass, C=Copper, D=Special

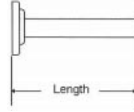
Flange 1: 1=CPRG, 2=CPRF, 6=Cover, 7=Choke, 8=Special

Basic Model No.	WG Size	Freq (GHz)	Standard Flange	Power Avg. (W)	Length (inches)
ST650	WR650	1.12 - 1.70	CPRF (2)	50	7.00
ST430	WR430	1.70 - 2.60	CPRF (2)	40	7.00
ST340	WR340	2.20 - 3.30	CPRF (2)	40	6.00
ST284	WR284	2.60 - 3.95	COVER (6)	30	3.00
ST229	WR229	3.30 - 4.90	CPRF (2)	25	3.00
ST187	WR187	3.95 - 5.85	COVER (6)	25	2.50
ST159	WR159	4.90 - 7.05	CPRF (2)	20	2.00
ST137	WR137	5.95 - 8.20	CPRF (2)	15	1.75
ST112	WR112	7.05 - 10.00	COVER (6)	15	1.50
ST102	WR102	7.00 - 11.00	COVER (6)	15	1.50
ST90	WR90	8.20 - 12.40	COVER (6)	15	1.50
ST75	WR75	10.00 - 15.00	COVER (6)	15	1.25
ST62	WR62	12.40 - 18.00	COVER (6)	10	1.00
ST51	WR51	15.00 - 22.00	COVER (6)	10	1.00
ST42	WR42	18.00 - 26.50	COVER (6)	10	1.00
ST34	WR34	22.00 - 33.00	COVER (6)	5	0.75
ST28	WR28	26.50 - 40.00	COVER (6)	5	0.75
ST22	WR22	33.00 - 50.00	COVER (6)	5	0.75

MEDIUM POWER TERMINATION

- Description:
- Full waveguide frequency range
 - Units pressure tested to 30 psi
 - Finish is a unique corrosion-resistant 316 stainless steel epoxy coating
 - Low outgassing characteristics

- VSWR: 1.10 max
- IFI series 740 utilizes High Power Ceramic Elements fired at 1300 C for low VSWR and table electrical characteristics



Ordering Information:

Typical Part #: MPT650_B_-2

Basic Model#:

Material: A=Alum, B=Brass, C=Copper, D=Special

Flange 1: 1=CPRG, 2=CPRF, 6=Cover, 7=Choke, 8=Special

Basic Model No.	WG Size	Freq (GHz)	Standard Flange	Power Avg. (W)	Length (inches)
MPT650	WR650	1.12 - 1.70	CPRF (2)	1500	13.00
MPT430	WR430	1.70 - 2.60	CPRF (2)	1200	12.00
MPT340	WR340	2.20 - 3.30	CPRF (2)	1200	12.00
MPT284	WR284	2.60 - 3.95	COVER (6)	1200	11.00
MPT229	WR229	3.30 - 4.90	CPRF (2)	1000	9.75
MPT187	WR187	3.95 - 5.85	COVER (6)	750	8.38
MPT159	WR159	4.90 - 7.05	CPRF (2)	625	8.00
MPT137	WR137	5.95 - 8.20	CPRF (2)	500	8.00
MPT112	WR112	7.05 - 10.00	COVER (6)	425	7.00
MPT102	WR102	7.00 - 11.00	COVER (6)	325	6.50
MPT90	WR90	8.20 - 12.40	COVER (6)	225	5.50
MPT75	WR75	10.00 - 15.00	COVER (6)	200	4.50
MPT62	WR62	12.40 - 18.00	COVER (6)	100	3.25
MPT51	WR51	15.00 - 22.00	COVER (6)	100	3.25
MPT42	WR42	18.00 - 26.50	COVER (6)	75	3.25
MPT34	WR34	22.00 - 33.00	COVER (6)	75	3.25
MPT28	WR28	26.50 - 40.00	COVER (6)	75	4.00
MPT22	WR22	33.00 - 50.00	COVER (6)	25	2.50

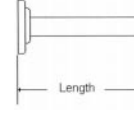
VERY HIGH POWER WAVEGUIDE TERMINATION

Model No	Waveguide Size	Freq (GHz)	Power Avg. (W)
WT650	WR650	1.12 - 1.70	8000
WT430	WR430	1.70 - 2.60	6500
WT284	WR284	2.60 - 3.95	5000
WT229	WR229	3.30 - 4.90	3000
WT187	WR187	3.95 - 5.85	3000
WT159	WR159	4.90 - 7.05	3000
WT137	WR137	5.85 - 8.20	3000
WT112	WR112	7.05 - 10.00	3000
WT90	WR90	8.20 - 12.40	1500
WT75	WR75	10.00 - 15.00	1400
WT62	WR62	12.40 - 18.00	1400
WT51	WR51	15.00 - 22.00	1200
WT42	WR42	18.00 - 26.50	1000
WT34	WR34	22.00 - 33.00	700
WT28	WR28	26.50 - 40.00	500

LOW POWER TERMINATION

- Description:
- Full waveguide frequency range
 - Units pressure tested to 30 psi
 - Finish is a unique corrosion-resistant 316 stainless steel epoxy coating

- IFI series LPT Terminations utilize a Precision Conical Element to achieve very low VSWR.
- For short size on High Power Terminations contact factory



Ordering Information:

Typical Part #: LPT650_B_-2

Basic Model#:

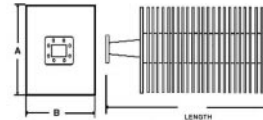
Material: A=Alum, B=Brass, C=Copper, D=Special

Flange 1: 1=CPRG, 2=CPRF, 6=Cover, 7=Choke, 8=Special

Basic Model No.	WG Size	Freq (GHz)	Standard Flange	VSWR max.	Power Avg. (W)	Length (inches)
LPT650	WR650	1.12 - 1.70	CPRF (2)	1.02	25	12.50
LPT430	WR430	1.70 - 2.60	CPRF (2)	1.02	15	11.00
LPT340	WR340	2.20 - 3.30	CPRF (2)	1.01	12	10.75
LPT284	WR284	2.60 - 3.95	COVER (6)	1.01	10	10.50
LPT229	WR229	3.30 - 4.90	CPRF (2)	1.01	10	7.50
LPT187	WR187	3.95 - 5.85	COVER (6)	1.01	8	6.25
LPT159	WR159	4.90 - 7.05	CPRF (2)	1.01	7	6.00
LPT137	WR137	5.95 - 8.20	CPRF (2)	1.01	6	5.50
LPT112	WR112	7.05 - 10.00	COVER (6)	1.01	4	5.00
LPT102	WR102	7.00 - 11.00	COVER (6)	1.01	3	4.00
LPT90	WR90	8.20 - 12.40	COVER (6)	1.01	4	4.00
LPT75	WR75	10.00 - 15.00	COVER (6)	1.01	2	4.00
LPT62	WR62	12.40 - 18.00	COVER (6)	1.01	1.5	4.00
LPT51	WR51	15.00 - 22.00	COVER (6)	1.01	1.0	4.00
LPT42	WR42	18.00 - 26.50	COVER (6)	1.01	0.5	2.50
LPT34	WR34	22.00 - 33.00	COVER (6)	1.01	0.5	2.50
LPT28	WR28	26.50 - 40.00	COVER (6)	1.02	0.5	2.00
LPT22	WR22	33.00 - 50.00	COVER (6)	1.02	0.5	1.50

HIGH POWER TERMINATION

- Description:
- Full waveguide frequency range
 - Units pressure tested to 30 psi
 - Finish is a unique corrosion-resistant 316 stainless steel epoxy coating
 - All HPT series Terminations are manufactured from 6061 Aluminum
 - Low outgassing characteristics
 - VSWR: 1.10 max
 - IFI series HPT utilizes High Power Ceramic Elements fired at 1300 C for low VSWR and stable electrical characteristics



Ordering Information:

Typical Part #: HPT650_-2

Basic Model#:

Flange 1: 1=CPRG, 2=CPRF, 6=Cover, 7=Choke, 8=Cover/Groove

Basic Model No.	WG Size	Freq (GHz)	Standard Flange	Power Avg. (W)	Length (inches)	Dim. A	Dim. B
HPT650	WR650	1.12 - 1.70	CPRF (2)	2500	13.00	8.00	8.00
HPT430	WR430	1.70 - 2.60	CPRF (2)	2500	9.00	6.00	6.00
HPT340	WR340	2.20 - 3.30	CPRF (2)	2500	12.00	6.00	6.00
HPT284	WR284	2.60 - 3.95	COVER (6)	2400	12.00	6.00	5.00
HPT229	WR229	3.30 - 4.90	CPRF (2)	2000	9.75	5.00	5.00
HPT187	WR187	3.95 - 5.85	COVER (6)	1500	9.00	4.50	4.50
HPT159	WR159	4.90 - 7.05	CPRF (2)	1300	9.00	4.50	4.50
HPT137A	WR137	5.95 - 8.20	CPRF (2)	1000	8.50	4.00	4.00
HPT137	WR137	5.95 - 8.20	CPRF (2)	1500	9.00	4.50	4.50
HPT112	WR112	7.05 - 10.00	COVER (6)	850	8.00	4.00	4.00
HPT102	WR102	7.00 - 11.00	COVER (6)	500	6.50	3.50	3.50
HPT90	WR90	8.20 - 12.40	COVER (6)	500	5.50	3.50	3.50
HPT75A	WR75	10.00 - 15.00	COVER (6)	350	5.00	3.50	3.50
HPT75	WR75	10.00 - 15.00	COVER (6)	550	5.00	4.50	4.50
HPT62	WR62	12.40 - 18.00	COVER (6)	250	4.50	3.00	3.00
HPT51	WR51	15.00 - 22.00	COVER (6)	250	4.50	3.00	3.00
HPT42	WR42	18.00 - 26.50	COVER (6)	250	4.50	2.25	2.25
HPT34	WR34	22.00 - 33.00	COVER (6)	175	4.00	2.00	2.00
HPT28	WR28	26.50 - 40.00	COVER (6)	175	4.00	2.00	2.00
HPT22	WR22	33.00 - 50.00	COVER (6)	100	3.00	1.50	1.50

VERY HIGH POWER DOUBLE RIDGE WAVEGUIDE TERMINATION

Model No.	Waveguide Size	Freq (GHz)	Power Avg. (W)
DRW750	WRD750	7.50 - 18.00	700
DRW650	WRD650	6.50 - 18.00	800
DRW580	WRD580	5.80 - 16.00	1000
DRW475	WRD475	4.75 - 11.00	1000

High Power Rating
Flange Code: C3 = Cover (WRD)

INSTRUMENTS FOR INDUSTRY INC.

903 South Second Street, Ronkonkoma, NY 11779

Tel: 631-467-8400 • Fax: 631-467-8558 • E mail: sales@ifi.com

www.ifi.com